

SGS INSTITUT FRESENIUS GmbH

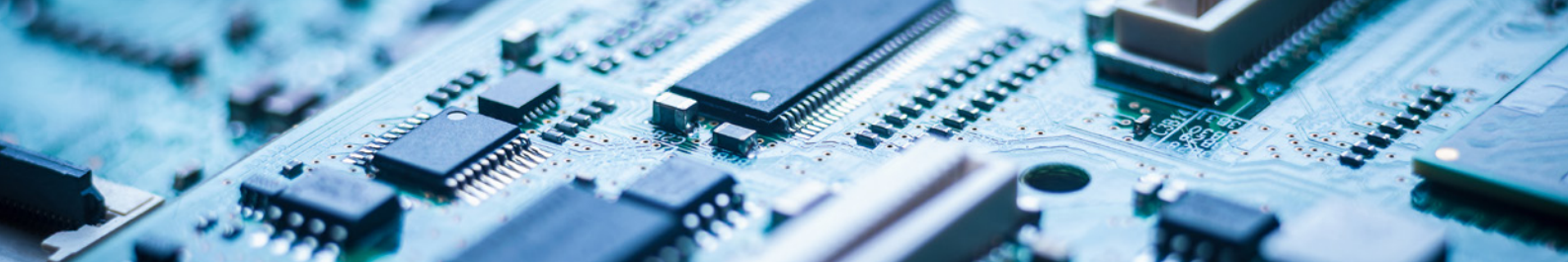
Counterfeit Chip Identification

Your partner for industry-related analysis services

Semiconductor testing according to SAE AS6081

SGS

**INSTITUT
FRESENIUS**



Analytics for microelectronics industry

Counterfeit semiconductors cause high damages to the industry worldwide. Experts estimate that up to 3% of the semiconductors traded worldwide do not meet the specification. In summary, chip counterfeiters would count to the top 20 semiconductor producers. The spectrum of counterfeits ranges from desoldering from electronic scrap, placing rejects on the market, to relabelling and elaborately produced fakes.

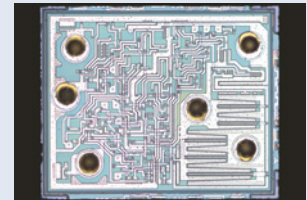
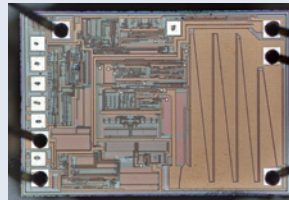
Testing strategy

- Documentation and packaging inspection
- Visual inspection (Light Microscopy)
- Remarking & resurfacing (solvent test)
- X-Ray inspection
- Lead finish evaluation (SEM/EDX)
- Delid/decapsulation, internal analysis
- Various additional tests (SAM, FIB, etc.)

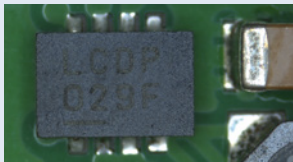
Golden sample



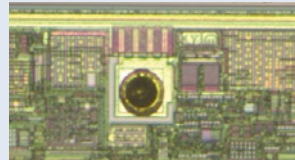
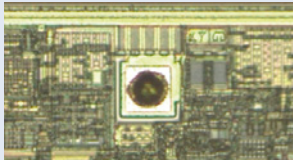
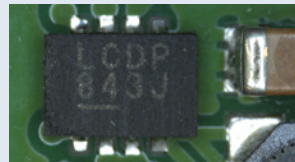
Suspicious sample



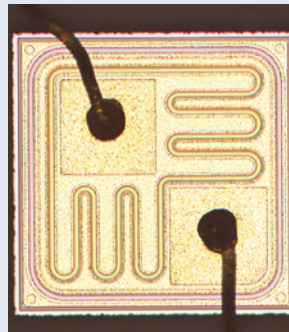
Golden sample



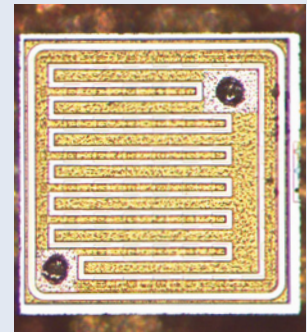
Suspicious sample



Golden sample



Suspicious sample



ABOUT US

Our location has its origins in the field of microelectronics analysis and can also look back on a tradition in the areas of materials testing, chemical analysis, and particle testing. As part of the SGS network with 2,700 locations worldwide, we offer you service from a single source and guarantee independent testing services.

Our test results support you in complying with legal requirements and help you to improve your production processes and products.

Benefit from our many years of know-how and experience!

SGS INSTITUT FRESENIUS GmbH
 Königsbrücker Landstr. 161
 01109 Dresden
 t +49 351 8841-200
de.dresden@sgs.com
www.sgs-institut-fresenius.de/en/material-failure-analysis

SGS INSTITUT FRESENIUS IS PART OF THE SGS GROUP, THE WORLD'S LEADING TESTING, INSPECTION AND CERTIFICATION COMPANY.

WHEN YOU NEED TO BE SURE

SGS